

D

C

B

A

3

3

2

2

1

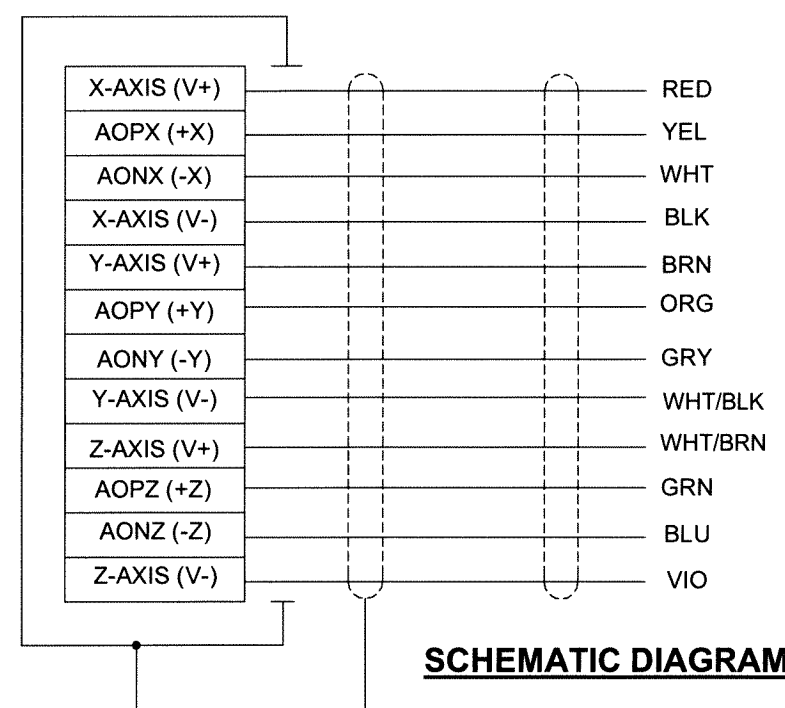
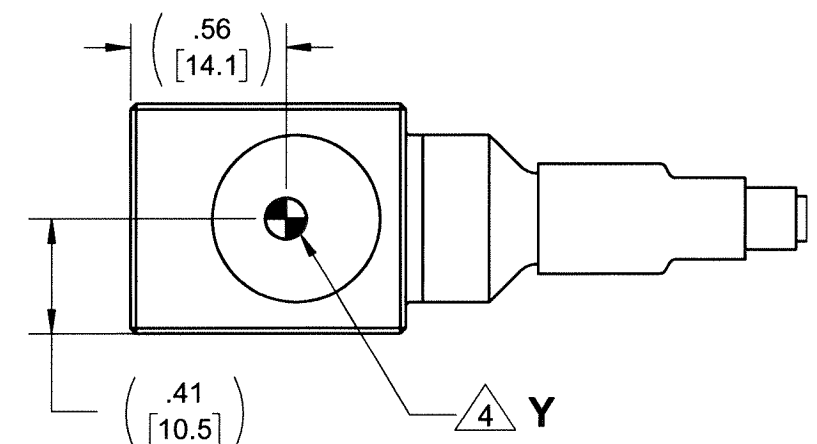
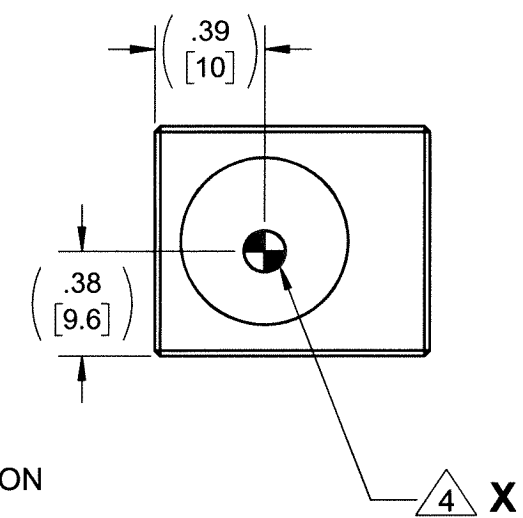
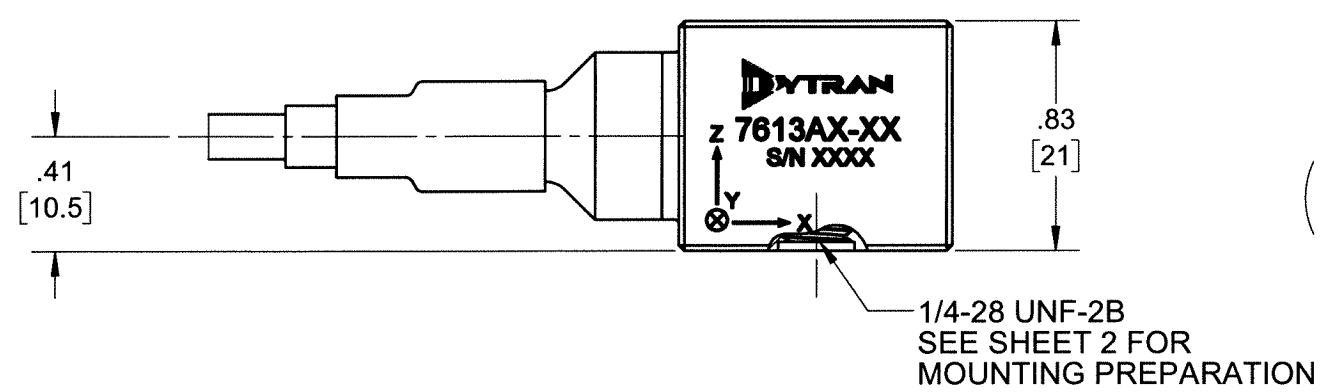
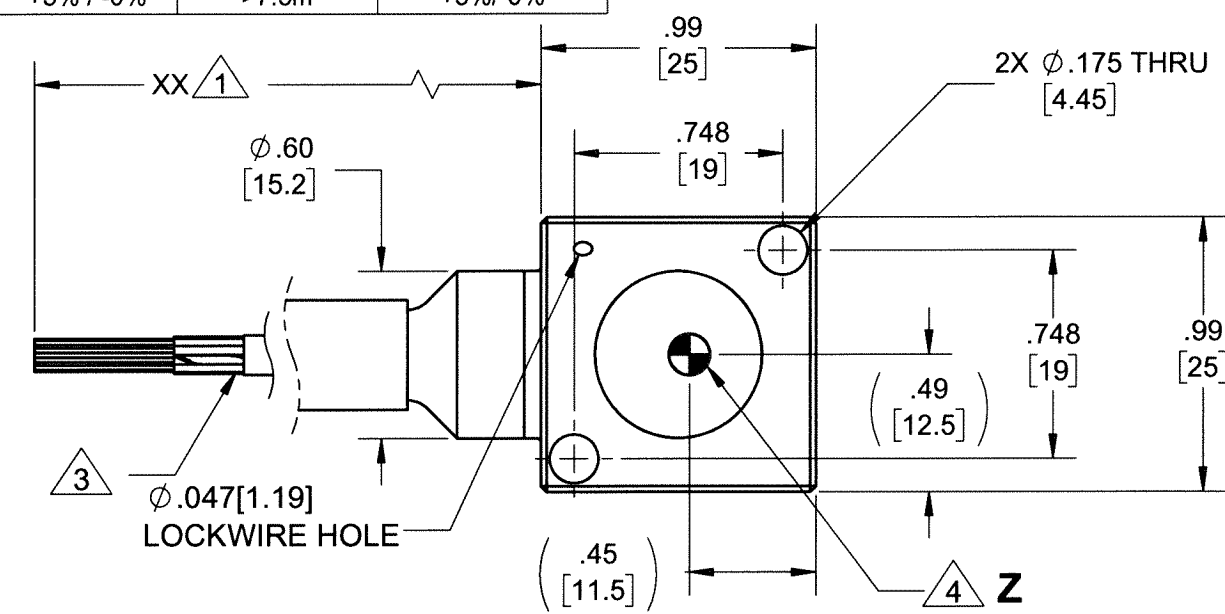
1

DWG NO 127-7613AX-XX SH 1 REV A

THE INFORMATION CONTAINED IN THIS DRAWING IS THE SOLE PROPERTY OF DYTRAN INSTRUMENTS INC. ANY REPRODUCTION IN PART OR AS A WHOLE WITHOUT THE WRITTEN PERMISSION OF DYTRAN INSTRUMENTS INC. IS PROHIBITED			
1 CABLE LENGTH TOLERANCE			
ENGLISH		[METRIC]	
≤1FT	+1/-0 IN	≤0.3m	+25mm -0mm
>1 FT - 5 FT	+2/-0 IN	.0.3 m-1.5m	+50mm -0mm
> 5 FT - 10 FT	+4/-0 IN	>1.5m-3m	+100mm -0mm
>10 FT - 25FT	+6 / -0 IN	>3m-7.5m	+150mm -0mm
>25 FT	+5% / -0%	>7.5m	+5%/-0%

MODEL	INPUT RANGE
7613A1-XX	±2g
7613A2-XX	±5g
7613A3-XX	±10g
7613A4-XX	±25g
7613A5-XX	±50g
7613A6-XX	±100g
7613A7-XX	±200g
7613A8-XX	±400g

REVISIONS					
REV.	ECN	DESCRIPTION	BY/DATE	CHK	APPR
A	14343	INITIAL RELEASE. SAME AS REV X4.	KG 07/12/18	LS	AS



5. MINOR VOIDS, SCARS, SCRATCHES AND MOUNTING BLEMISH/WITNESS MARKS ON EXTERIOR SURFACES ARE ALLOWED DUE TO RESTRAINING AND HANDLING DURING TESTING, TRANSPORT OR PROCESSING. THESE APPEAR AS INDICATORS THAT DO NOT AFFECT FORM, FIT OR FUNCTION AS INTENDED BY DESIGN OR APPLICATION
- 4 MARKING DENOTES LOCATION OF SENSING ELEMENT'S CENTER OF MASS
- 3 SEE SHEET 2 TABLE FOR CABLE SPECIFICATIONS.
2. MATERIAL: TITANIUM ALLOY. WEIGHT: 45 GRAMS MAX, LESS CABLE.
- 1 PART NUMBER 7613AX-XX. "XX" DENOTES LENGTH IN FEET. SEE TABLE FOR LENGTH TOLERANCE
- NOTES: UNLESS OTHERWISE SPECIFIED

UNLESS OTHERWISE SPECIFIED:
INTERPRET DIM & TOL PER
ASME Y14.5M - 1994.
REMOVE BURRS.
COUNTERSINK INTERNAL THDS
90° TO MAJOR DIA.
CHAM EXT THDS 45° TO MINOR DIA.
THD LENGTHS AND DEPTHS ARE FOR
MIN FULL THDS.
DIMENSIONS APPLY AFTER FINISHING.

ALL MACHINED SURFACES.
TOTAL RUNOUT WITHIN .005.
BREAK SHARP EDGES .005 TO .010.
MACHINED FILLET RADII .005 TO .015.
WELDING SYMBOLS PER AWS A2.4.
ABBREVIATIONS PER MIL-STD-12.

DECIMALS	METRIC	ANGLES
.XX ±.03	.X ± 0.8	±1°
.XXX ±.010	.XX ±0.25	

APPROVALS	DATE
ORIG	LN
CHK	LS
APP	AS

DO NOT SCALE DRAWING

UNLESS OTHERWISE SPECIFIED:
DIMENSIONS IN BRACKETS [] ARE IN
MILLIMETERS TOLERANCES ARE:

THIRD ANGLE PROJECTION
USA

SIZE B

SCALE: 3:2

DYTRAN **MASTER**
INSTRUMENTS, INC. Chatsworth, CA
ONLY IN RED

TITLE: **OUTLINE/INSTALLATION DWG,
TRIAxIAL DC ACCELEROMETER,
7613AX-XX SERIES**

SIZE	CAGE CODE	DWG NO	REV
B	2W033	127-7613AX-XX	A

SHEET 1 OF 2

THE INFORMATION CONTAINED IN THIS DRAWING IS THE SOLE PROPERTY OF
DYTRAN INSTRUMENTS INC. ANY REPRODUCTION IN PART OR AS A WHOLE
WITHOUT THE WRITTEN PERMISSION OF DYTRAN INSTRUMENTS INC. IS PROHIBITED

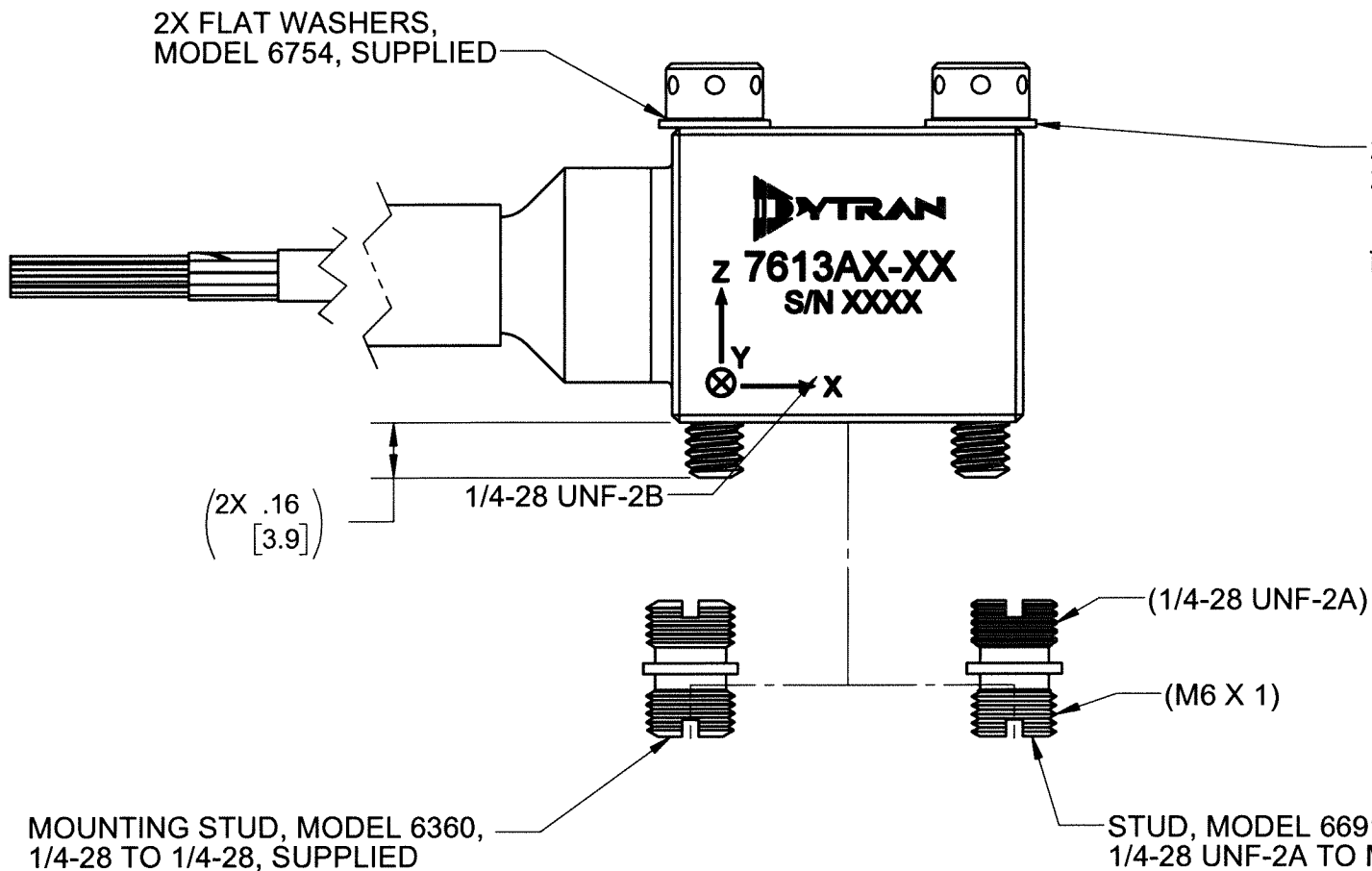
3 12 CONDUCTOR CABLE

WIRE TYPE	EXTRUDED FEP INSULATION .006 WALL THICKNESS
TEMPERATURE	200°C
VOLTAGE	600 VOLTS
WIRE DIAMETER	.032 NOMINAL
SHIELD	38 AWG SILVER PLATED COPPER BRAIDED 95% COVERAGE 7E-16C36F/30B
JACKET	EXTRUDED WHITE FEP .010 WALL THICKNESS
CABLE DIA.	Ø .171, NOM
12 CONDUCTOR AWG	26-7/34 SILVER PLATED COPPER

2X FLAT WASHERS,
MODEL 6754, SUPPLIED

2X MOUNTING SCREW, MODEL 69034A16 (8-32 x 1.0), SUPPLIED
2X MOUNTING SCREW, MODEL 6687A1 (M4x0.7 X 25mm), SUPPLIED

RECOMMENDED MOUNTING PREPARATION:
PREPARE FLAT MOUNTING SURFACE EQUAL TO OR BETTER THAN
.001 TIR. TAP 8-32 UNRC-3B .200 MIN. (OR 2X M4 X 0.7-6g .20 [5.1] MIN.)
RECOMMENDED TORQUE 10-12 LB-IN. (1.12-1.35 N-m).



RECOMMENDED MOUNTING PREPARATION: MODEL 6360
PREPARE MOUNTING SURFACE, Ø 1.25 [31.2] MIN, FLAT TO .001 TIR.
TAP 1/4-28 UNF-2B ∇ .200 [5.1] MIN. TORQUE TO 12-15 Lb-in.


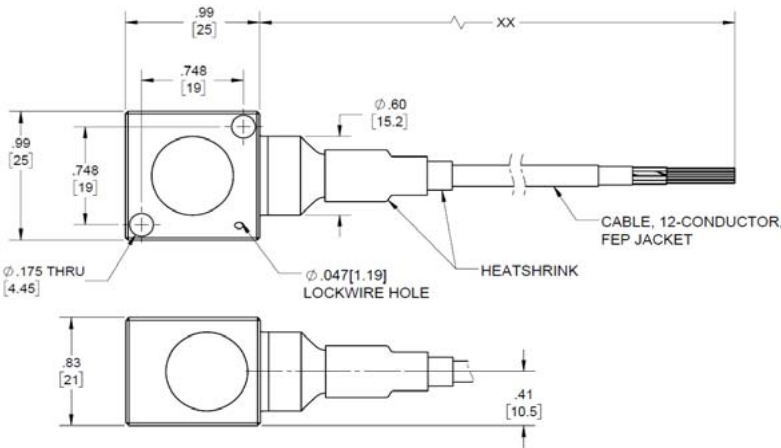
RECOMMENDED MOUNTING PREPARATION: MODEL 6691
PREPARE MOUNTING SURFACE, Ø 1.25 [31.2] MIN, FLAT TO
.001 TIR. TAP M6 X 1 ∇ .200 [5.1] MIN. TORQUE TO 12-15 Lb-in.




TITLE:
OUTLINE/INSTALLATION DWG,
TRIAxIAL DC ACCELEROMETER,
7613AX-XX SERIES

SIZE B	CAGE CODE 2W033	DWG NO 127-7613AX-XX	REV A
-----------	--------------------	-------------------------	----------

SCALE: 2:1	SHEET 2 OF 2
------------	--------------

Model Number 7613A6-XX	PERFORMANCE SPECIFICATION				DOC NO PS7613A6-XX																																																																																												
	TRIAxIAL VARIABLE CAPACITANCE ACCELEROMETER				REV B, ECN 14672, 11/30/18																																																																																												
<div><div></div><div><ul style="list-style-type: none">• VARIABLE CAPACITANCE TECHNOLOGY• DIFFERENTIAL MODE• HERMETICALLY SEALED• DC RESPONSE</div></div>																																																																																																	
<div><div><table><tr><th colspan="2">ENGLISH</th><th colspan="2">SI</th></tr><tr><td>1.6</td><td>oz</td><td>45</td><td>grams</td></tr><tr><td>Flying leads</td><td></td><td>Flying leads</td><td></td></tr><tr><td>Titanium Alloy</td><td></td><td>Titanium Alloy</td><td></td></tr><tr><td>MEMS</td><td></td><td>MEMS</td><td></td></tr></table></div><div><table><tr><td>±100</td><td>g</td><td>±981</td><td>m/s²</td></tr><tr><td>0 - 1300</td><td>Hz</td><td>0 - 1300</td><td>Hz</td></tr><tr><td>0 - 2500</td><td>Hz</td><td>0 - 2500</td><td>Hz</td></tr><tr><td>>3000</td><td>Hz</td><td>>3000</td><td>Hz</td></tr><tr><td>5</td><td>mV/g</td><td>0.5</td><td>mV/m/s²</td></tr><tr><td>100</td><td>µg rms/√ Hz</td><td>981</td><td>µm/s² /√ Hz</td></tr><tr><td>0.5</td><td>% F.S</td><td>0.5</td><td>% F.S</td></tr><tr><td>3</td><td>%</td><td>3</td><td>%</td></tr></table></div><div><table><tr><td>±5000</td><td>gpk</td><td>±49050</td><td>m/s² peak</td></tr><tr><td>111</td><td>(ppm of span)/°F</td><td>200</td><td>(ppm of span)/°C</td></tr><tr><td>4</td><td>% of span</td><td>4</td><td>% of span</td></tr><tr><td>-67 to +257</td><td>°F</td><td>-55 to +125</td><td>°C</td></tr><tr><td>Hermetic</td><td></td><td>Hermetic</td><td></td></tr></table></div><div><table><tr><td>2.5</td><td>VDC</td><td>2.5</td><td>VDC</td></tr><tr><td>1225</td><td>Ω</td><td>1225</td><td>Ω</td></tr><tr><td>±3 to ±11</td><td>VDC</td><td>±3 to ±11</td><td>VDC</td></tr><tr><td>13</td><td>mA DC</td><td>13</td><td>mA DC</td></tr><tr><td>>65</td><td>dB</td><td>>65</td><td>dB</td></tr></table></div></div>						ENGLISH		SI		1.6	oz	45	grams	Flying leads		Flying leads		Titanium Alloy		Titanium Alloy		MEMS		MEMS		±100	g	±981	m/s ²	0 - 1300	Hz	0 - 1300	Hz	0 - 2500	Hz	0 - 2500	Hz	>3000	Hz	>3000	Hz	5	mV/g	0.5	mV/m/s ²	100	µg rms/√ Hz	981	µm/s ² /√ Hz	0.5	% F.S	0.5	% F.S	3	%	3	%	±5000	gpk	±49050	m/s ² peak	111	(ppm of span)/°F	200	(ppm of span)/°C	4	% of span	4	% of span	-67 to +257	°F	-55 to +125	°C	Hermetic		Hermetic		2.5	VDC	2.5	VDC	1225	Ω	1225	Ω	±3 to ±11	VDC	±3 to ±11	VDC	13	mA DC	13	mA DC	>65	dB	>65	dB
ENGLISH		SI																																																																																															
1.6	oz	45	grams																																																																																														
Flying leads		Flying leads																																																																																															
Titanium Alloy		Titanium Alloy																																																																																															
MEMS		MEMS																																																																																															
±100	g	±981	m/s ²																																																																																														
0 - 1300	Hz	0 - 1300	Hz																																																																																														
0 - 2500	Hz	0 - 2500	Hz																																																																																														
>3000	Hz	>3000	Hz																																																																																														
5	mV/g	0.5	mV/m/s ²																																																																																														
100	µg rms/√ Hz	981	µm/s ² /√ Hz																																																																																														
0.5	% F.S	0.5	% F.S																																																																																														
3	%	3	%																																																																																														
±5000	gpk	±49050	m/s ² peak																																																																																														
111	(ppm of span)/°F	200	(ppm of span)/°C																																																																																														
4	% of span	4	% of span																																																																																														
-67 to +257	°F	-55 to +125	°C																																																																																														
Hermetic		Hermetic																																																																																															
2.5	VDC	2.5	VDC																																																																																														
1225	Ω	1225	Ω																																																																																														
±3 to ±11	VDC	±3 to ±11	VDC																																																																																														
13	mA DC	13	mA DC																																																																																														
>65	dB	>65	dB																																																																																														
<div><div><p>PHYSICAL</p><p>Weight, Max (Less Cable)</p><p>Integral Cable [1]</p><p>Material</p><p>Sensing Technology</p></div><div><p>PERFORMANCE</p><p>Input Range</p><p>Frequency Response, (±5%) (±3dB)</p><p>Resonant Frequency</p><p>Sensitivity Differential, ±5% [2]</p><p>Output Noise, Differential ,Typ</p><p>Non-Linearity, Max [3]</p><p>Cross Axis Sensitivity, Max</p></div><div><p>ENVIRONMENTAL</p><p>Maximum Mechanical Shock (0.1 ms)</p><p>Bias Temperature Shift ,Max [4]</p><p>Bias Calibration Error, Max</p><p>Operating Temperature Range</p><p>Seal</p></div><div><p>ELECTRICAL</p><p>Output Common Mode Voltage, Typ</p><p>Output Impedance,Nom</p><p>Operating Voltage</p><p>Operating Current, Max. (Each Axis)</p><p>Power Supply Rejection Ratio</p></div></div>																																																																																																	
<div><div><p>This family also includes:</p><table><tr><th>Model</th><th>Input Range (g)</th><th>Frequency Response (Hz) +/-3dB</th><th>Sensitivity Differential, ±5% (mV/g)</th><th>Max.Shock (0.1ms)</th><th>Noise Differential (µg/√Hz)</th></tr><tr><td>7613A1-XX</td><td>±2</td><td>0-400</td><td>250</td><td>2000</td><td>7</td></tr><tr><td>7613A2-XX</td><td>±5</td><td>0-500</td><td>100</td><td>2000</td><td>12</td></tr><tr><td>7613A3-XX</td><td>±10</td><td>0-1000</td><td>50</td><td>5000</td><td>18</td></tr><tr><td>7613A4-XX</td><td>±25</td><td>0-1400</td><td>20</td><td>5000</td><td>25</td></tr><tr><td>7613A5-XX</td><td>±50</td><td>0-2000</td><td>10</td><td>5000</td><td>50</td></tr><tr><td>7613A7-XX</td><td>±200</td><td>0-3000</td><td>2.5</td><td>5000</td><td>200</td></tr><tr><td>7613A8-XX</td><td>±400</td><td>0-4000</td><td>1.25</td><td>5000</td><td>400</td></tr></table></div><div><p>Refer to the performance specifications of the products in this family for detailed description.</p><p>Supplied Accessories:</p><p>1) Accredited calibration certificate (ISO 17025)</p><p>2) Mounting stud, Model 6360, 1/4-28 UNF-2A, Qty 1</p><p>3) Mounting stud, Model 6691, 1/4-28 UNF-2A to M6 X 1, Qty 1</p><p>4) Mounting screws, Model 69034A16, 8-32 x 1.0, Qty. 2</p><p>5) Mounting screws, Model 6687A1, M4x0.7 x 25mm, Qty. 2</p><p>6) Flat washers, Model 6754, Qty. 2</p><p>Notes:</p><p>[1] 12-conductor, 26AWG, White FEP Jacket</p><p>[2] Single ended sensitivity is half of values shown. (Ref. at 100 Hz)</p><p>[3] -90% to +90% of Full Scale.</p><p>[4] Over the rated temperature range.</p><p>[5] In the interest of constant product improvement, we reserve the right to change specifications without notice.</p></div><div></div></div>						Model	Input Range (g)	Frequency Response (Hz) +/-3dB	Sensitivity Differential, ±5% (mV/g)	Max.Shock (0.1ms)	Noise Differential (µg/√Hz)	7613A1-XX	±2	0-400	250	2000	7	7613A2-XX	±5	0-500	100	2000	12	7613A3-XX	±10	0-1000	50	5000	18	7613A4-XX	±25	0-1400	20	5000	25	7613A5-XX	±50	0-2000	10	5000	50	7613A7-XX	±200	0-3000	2.5	5000	200	7613A8-XX	±400	0-4000	1.25	5000	400																																												
Model	Input Range (g)	Frequency Response (Hz) +/-3dB	Sensitivity Differential, ±5% (mV/g)	Max.Shock (0.1ms)	Noise Differential (µg/√Hz)																																																																																												
7613A1-XX	±2	0-400	250	2000	7																																																																																												
7613A2-XX	±5	0-500	100	2000	12																																																																																												
7613A3-XX	±10	0-1000	50	5000	18																																																																																												
7613A4-XX	±25	0-1400	20	5000	25																																																																																												
7613A5-XX	±50	0-2000	10	5000	50																																																																																												
7613A7-XX	±200	0-3000	2.5	5000	200																																																																																												
7613A8-XX	±400	0-4000	1.25	5000	400																																																																																												
Units on the line drawing are in inches. Refer to 127-7613AX-XX for more information.																																																																																																	



21592 Marilla Street, Chatsworth, California 91311 Phone: 818.700.7818 Fax:818.700.7880 www.dytran.com

For permission to reprint this content, please contact info@dytran.com

This family also includes:

Model	Input Range (g)	Frequency Response (Hz) +/-3dB	Sensitivity Differential, ±5% (mV/g)	Max.Shock (0.1ms)	Noise Differential (µg/√Hz)
7613A1-XX	±2	0-400	250	2000	7
7613A2-XX	±5	0-500	100	2000	12
7613A3-XX	±10	0-1000	50	5000	18
7613A4-XX	±25	0-1400	20	5000	25
7613A5-XX	±50	0-2000	10	5000	50
7613A7-XX	±200	0-3000	2.5	5000	200
7613A8-XX	±400	0-4000	1.25	5000	400

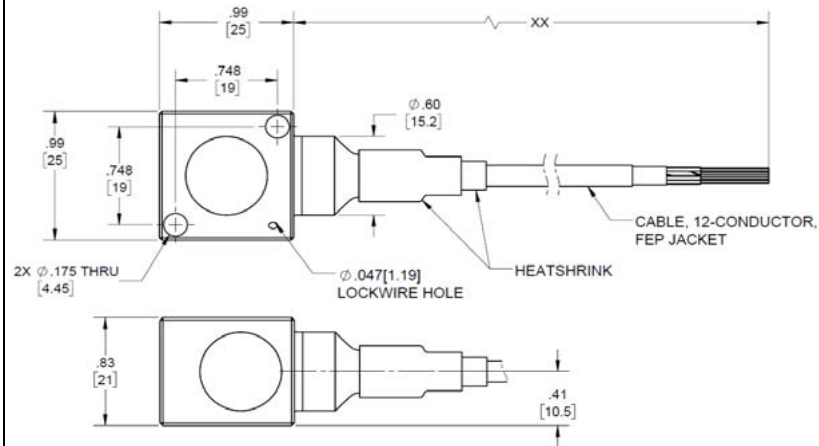
Refer to the performance specifications of the products in this family for detailed description.

Supplied Accessories:

- 1) Accredited calibration certificate (ISO 17025)
- 2) Mounting stud, Model 6360, 1/4-28 UNF-2A, Qty 1
- 3) Mounting stud, Model 6691, 1/4-28 UNF-2A to M6 X 1, Qty 1
- 4) Mounting screws, Model 69034A16, 8-32 x 1.0, Qty. 2
- 5) Mounting screws, Model 6687A1, M4x0.7 x 25mm, Qty. 2
- 6) Flat washers, Model 6754, Qty. 2

Notes:

- [1] 12-conductor, 26AWG, White FEP Jacket
- [2] Single ended sensitivity is half of values shown. (Ref. at 100 Hz)
- [3] -90% to +90% of Full Scale.
- [4] Over the rated temperature range.
- [5] In the interest of constant product improvement, we reserve the right to change specifications without notice.



Units on the line drawing are in inches. Refer to 127-7613AX-XX for more information.



21592 Marilla Street, Chatsworth, California 91311 Phone: 818.700.7818 Fax:818.700.7880 www.dytran.com
For permission to reprint this content, please contact info@dytran.com