

THE INFORMATION CONTAINED IN THIS DRAWING IS THE SOLE PROPERTY OF  
DYTRAN INSTRUMENTS INC. ANY REPRODUCTION IN PART OR AS A WHOLE  
WITHOUT THE WRITTEN PERMISSION OF DYTRAN INSTRUMENTS INC. IS PROHIBITED

MODEL	INPUT RANGE
7603D1	±2g
7603D2	±5g
7603D3	±10g
7603D4	±25g
7603D5	±50g
7603D6	±100g
7603D7	±200g
7603D8	±400g

DWG NO: 127-7603D SH 1 REV B

REVISIONS

REV.	ECN	DESCRIPTION	BY/DATE	CHK	APPR
A	13625	INITIAL RELEASE. REVISED PIN OUT.	NDC 08/03/17	LN	AS
B	13709	69034A16 WAS: 6753A1	RA, 09/07/17	MJ	LW

C

B

A

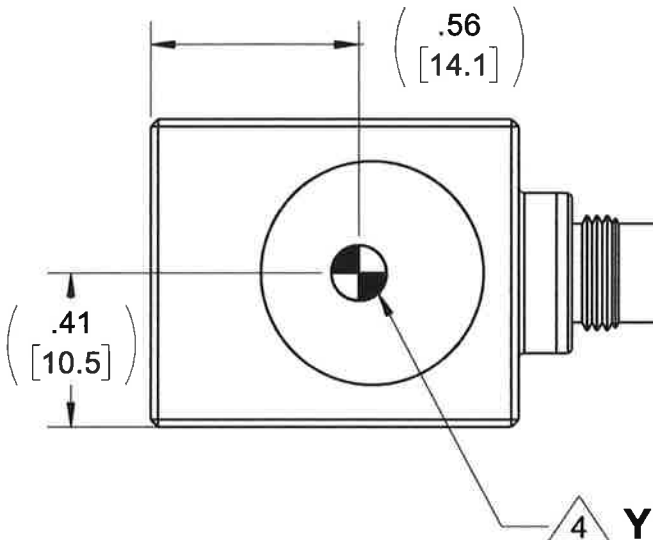
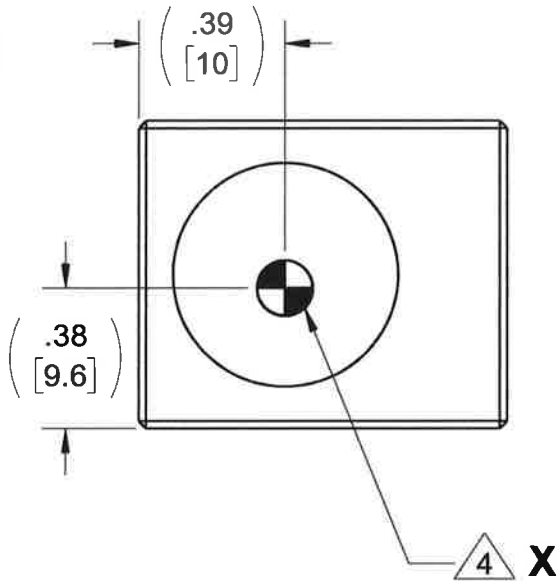
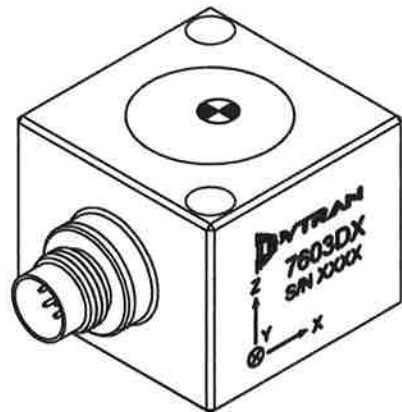
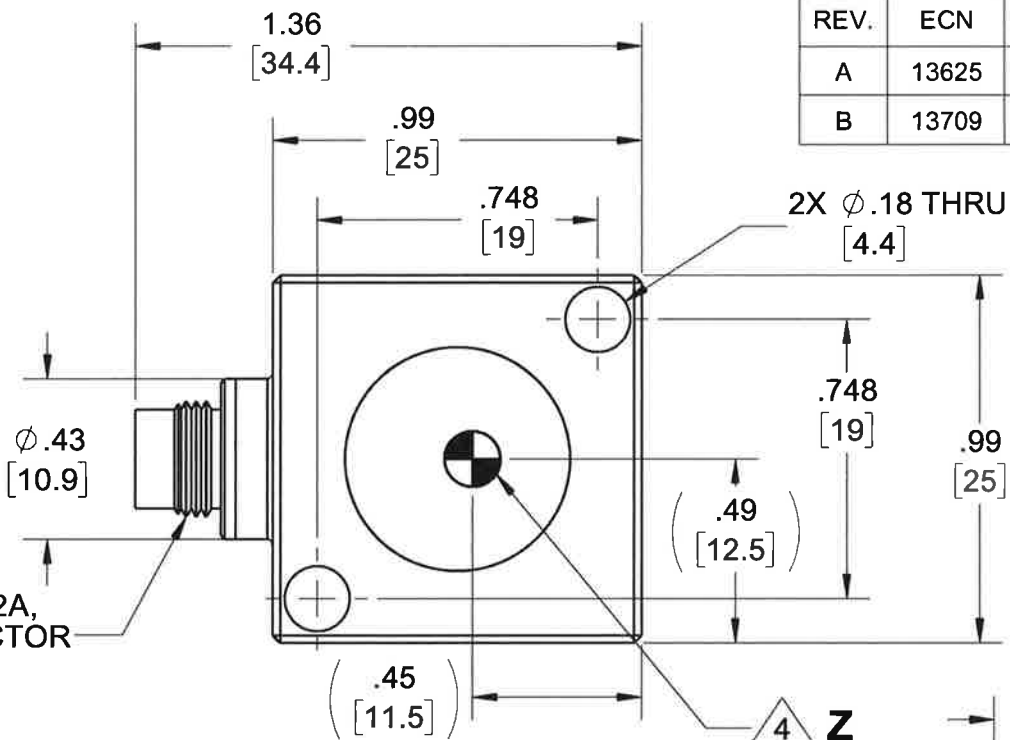
D

C

B

A

5. MINOR VOIDS, SCARS, SCRATCHES AND MOUNTING BLEMISH/WITNESS MARKS ON EXTERIOR SURFACES ARE ALLOWED DUE TO RESTRAINING AND HANDLING DURING TESTING, TRANSPORT OR PROCESSING. THESE APPEAR AS INDICATORS THAT DO NOT AFFECT FORM, FIT OR FUNCTION AS INTENDED BY DESIGN OR APPLICATION
- 4 MARKING DENOTES LOCATION OF SENSING ELEMENT'S CENTER OF MASS
- 3 MATES WITH DYTRAN 6964AXX CABLE (XX DENOTES LENGTH IN FT)
2. WEIGHT: 38 GRAMS, MAX.
1. MATERIAL: TITANIUM ALLOY.
- NOTES: UNLESS OTHERWISE SPECIFIED



UNLESS OTHERWISE SPECIFIED:  
INTERPRET DIM & TOL PER  
ASME Y14.5M - 1994.  
REMOVE BURRS.  
COUNTERSINK INTERNAL THDS  
90° TO MAJOR DIA.  
CHAM EXT THDS 45° TO MINOR DIA.  
THD LENGTHS AND DEPTHS ARE FOR  
MIN FULL THDS.  
DIMENSIONS APPLY AFTER FINISHING.

ALL MACHINED SURFACES.  
TOTAL RUNOUT WITHIN .005.  
BREAK SHARP EDGES .005 TO .010.  
MACHINED FILLET RADII .005 TO .015.  
WELDING SYMBOLS PER AWS A2.4.  
ABBREVIATIONS PER MIL-STD-12.

DECIMALS	METRIC	ANGLES
.XX ±.03	.X ± 0.8	±1°
.XXX ±.010	.XX ±0.25	

APPROVALS		DATE
ORIG	NDC	08/03/17
CHK	LN	08/16/17
APP	AS	08/16/17

DO NOT SCALE DRAWING

THIRD ANGLE PROJECTION  
USA

**DYTRAN**  
INSTRUMENTS, INC.  
Chatsworth, CA

TITLE: **OUTLINE/INSTALLATION DWG,  
TRIAxIAL DC ACCELEROMETER,  
7603D SERIES**

SIZE <b>B</b>	CAGE CODE <b>2W033</b>	DWG NO <b>127-7603D</b>	REV <b>B</b>
------------------	---------------------------	----------------------------	-----------------

SCALE: 1:1

SHEET 1 OF 2

4

3

DWG NO

127-7603D

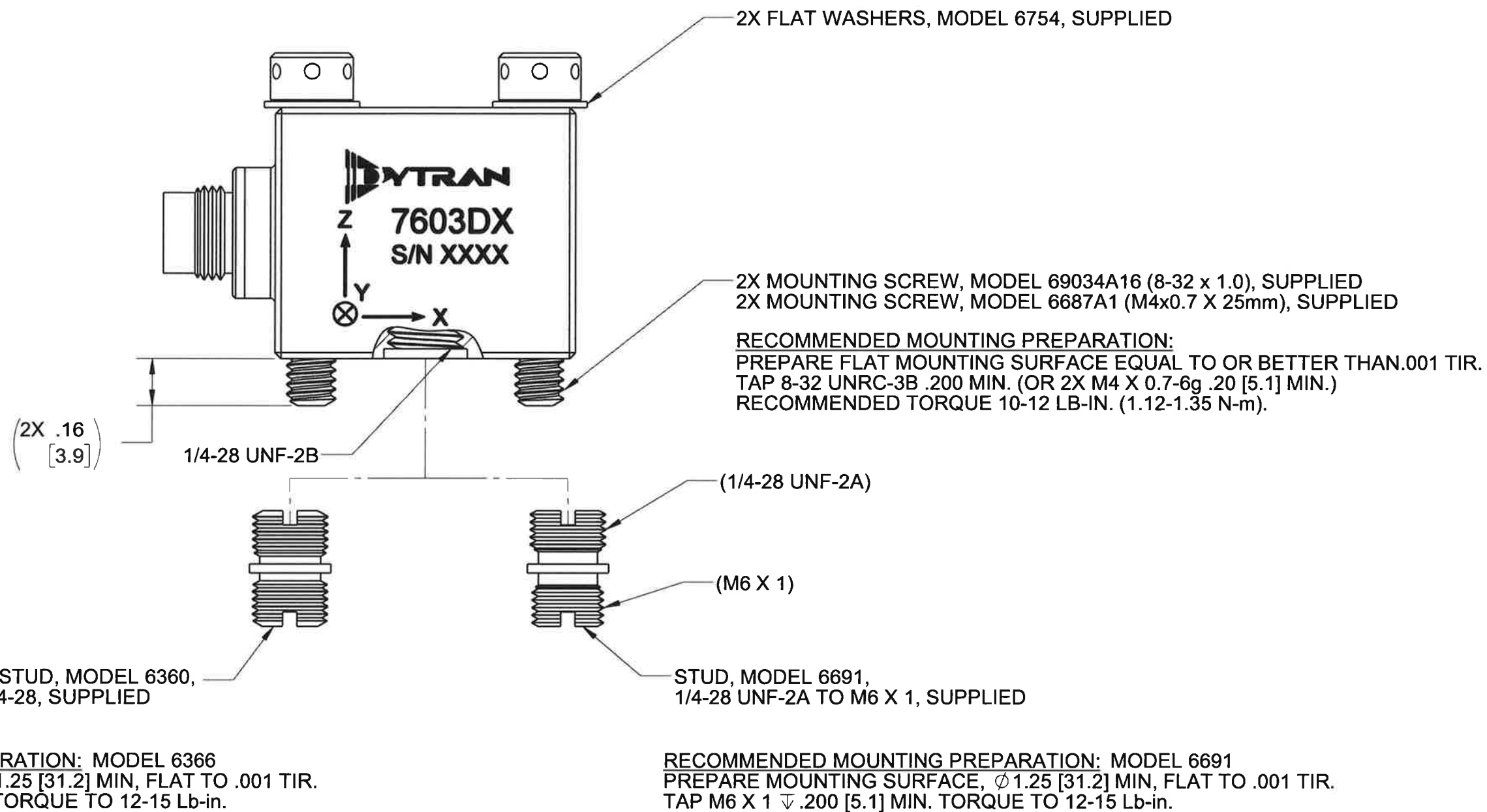
SH 2

REV B

2

1

THE INFORMATION CONTAINED IN THIS DRAWING IS THE SOLE PROPERTY OF  
DYTRAN INSTRUMENTS INC. ANY REPRODUCTION IN PART OR AS A WHOLE  
WITHOUT THE WRITTEN PERMISSION OF DYTRAN INSTRUMENTS INC. IS PROHIBITED



TITLE: OUTLINE/INSTALLATION DWG,  
TRIAxIAL DC ACCELEROMETER,  
7603D SERIES

SIZE <b>B</b>	CAGE CODE <b>2W033</b>	DWG NO <b>127-7603D</b>	REV <b>B</b>
------------------	---------------------------	----------------------------	-----------------


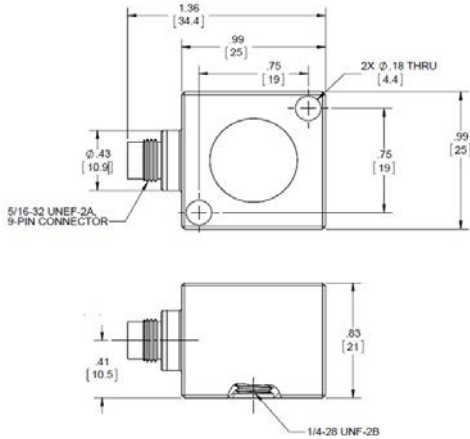
SCALE: 2:1	SHEET 2 OF 2
------------	--------------

4

3

2

1

Model Number 7603D2	PERFORMANCE SPECIFICATION				DOC NO PS7603D2
	TRIAXIAL VARIABLE CAPACITANCE ACCELEROMETER				REV E, ECN 14848, 02/05/19
	<b>• VARIABLE CAPACITANCE TECHNOLOGY</b> <b>• DIFFERENTIAL MODE</b> <b>• HERMETICALLY SEALED</b> <b>• DC RESPONSE</b>				
	<b>PHYSICAL</b> Weight, Max Connector Material Sensing Technology				
	<b>PERFORMANCE</b> Input Range Frequency Response (±5%) Frequency Response (±3dB) Resonant Frequency Sensitivity Differential, ±5% [1] Output Noise, Differential, Typ Non-Linearity, Max [2] Cross Axis Sensitivity, Max				
	<b>ENVIRONMENTAL</b> Maximum Mechanical Shock (0.1 ms) Bias Temperature Shift, Max [3] Bias Calibration Error, Max Operating Temperature Range Seal				
	<b>ELECTRICAL</b> Output Common Mode Voltage, ± VDC Output Impedance, Nom Operating Voltage [6] Operating Current (AOP & AON open), Max Power Supply Rejection Ratio				
	<b>Supplied Accessories:</b> 1) Accredited calibration certificate (ISO 17025) 2) Mounting stud, Model 6360, 1/4-28 UNF-2A, Qty 1 3) Mounting stud, Model 6691, 1/4-28 UNF-2A to M6 X 1, Qty 1 4) Mounting screws, Model 69034A16, 8-32 x 1.0, Qty. 2 5) Mounting screws, Model 6687A1, M4x0.7 x 25mm, Qty. 2 6) Flat washers, Model 6754, Qty. 2				
	<b>Notes:</b> [1] Single ended sensitivity is half of values shown. (Ref. at 100 Hz) [2] -90% to +90% of Full Scale. [3] Over the rated temperature range. [4] Bias voltage equal to (+v - (-v)) / 2 [5] In the interest of constant product improvement, we reserve the right to change specifications without notice. [6] +6.0 to +22.0 VDC in single supply operation with V- grounded.				
					
	Units on the line drawing are in inches. Refer to 127-7603D for more information.				

