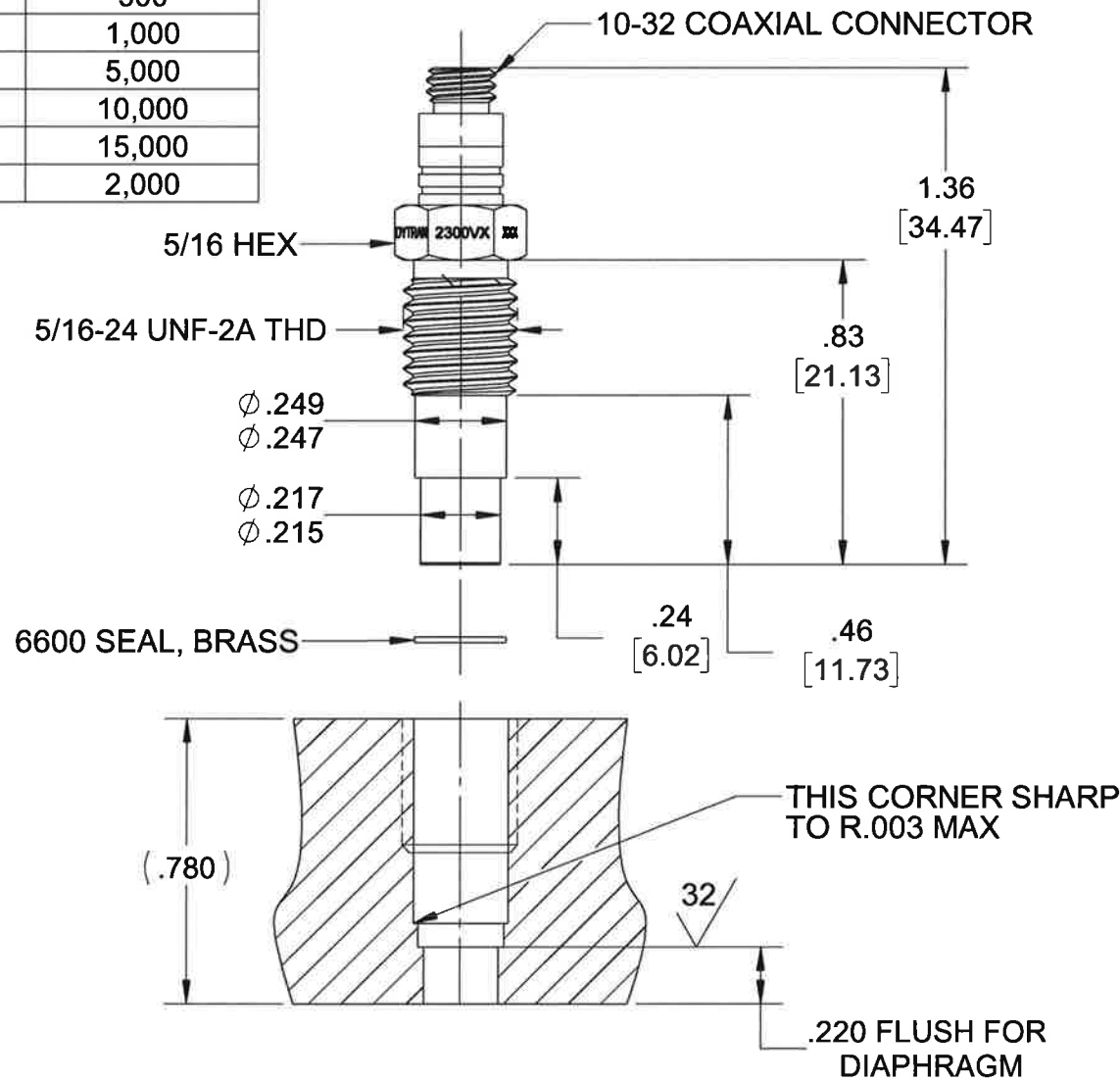


THE INFORMATION CONTAINED IN THIS DRAWING IS THE SOLE PROPERTY OF DYTRAN INSTRUMENTS INC. ANY REPRODUCTION IN PART OR AS A WHOLE WITHOUT THE WRITTEN PERMISSION OF DYTRAN INSTRUMENTS INC. IS PROHIBITED

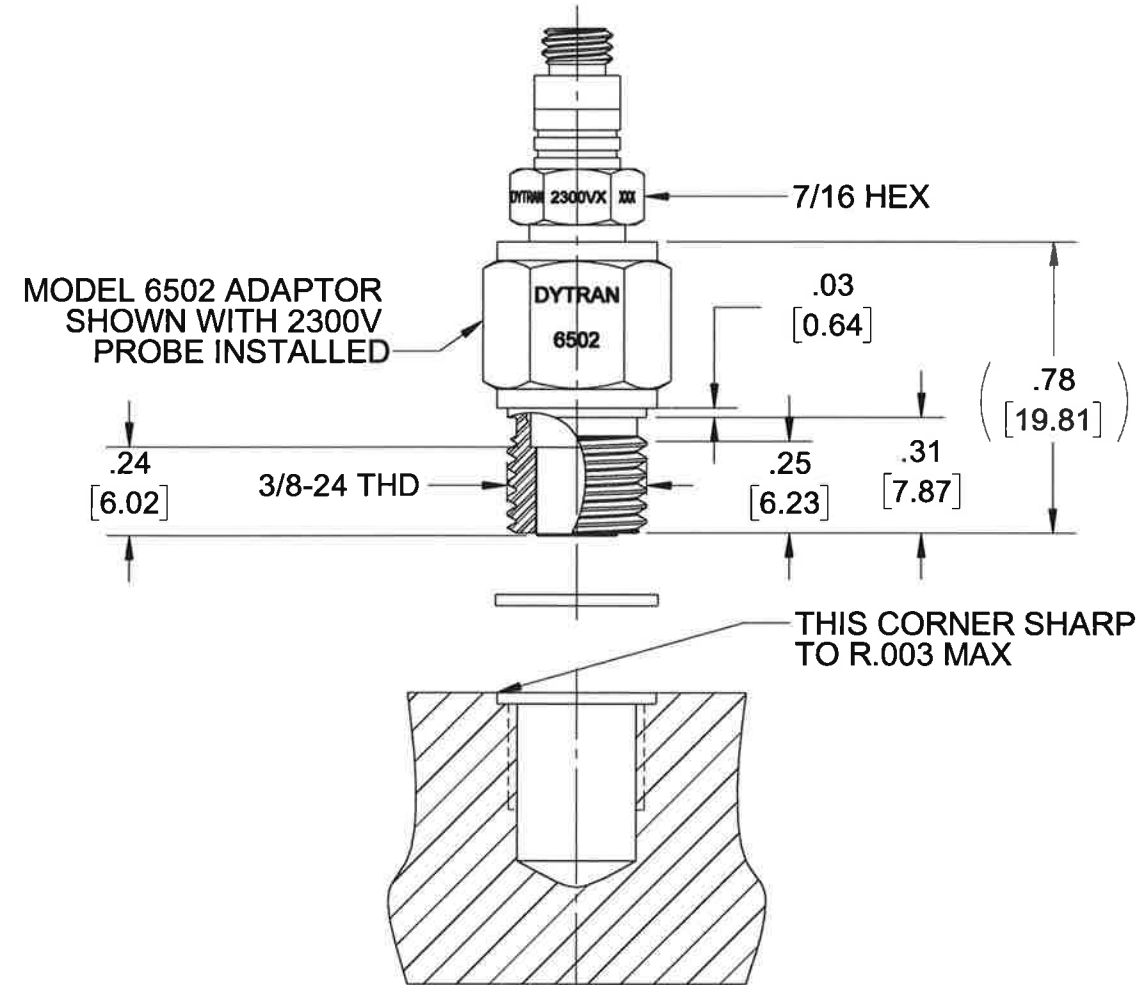
MODEL	SENSITIVITY mV/psi	RANGE psi
2300V1	20	250
2300V3	10	500
2300V4	5	1,000
2300V5	1	5,000
2300V6	0.5	10,000
2300V7	0.33	15,000
2300V8	2.5	2,000



- PORT PREPARATION INSTRUCTIONS, 2300V
1. DRILL AND REAM $\phi .221 +.001/.000$ THRU
 2. $\square \phi .250 +.003/-.000 \times .560 \downarrow$
 3. DRILL $\phi .272 +.003/-.000 \times .500 \downarrow$
 4. BOTTOM TAP 5/16-24 UNF-2B X .440 MIN DEPTH

3. MINOR VOIDS, SCARS, SCRATCHES AND MOUNTING BLEMISH/WITNESS MARKS ON EXTERIOR SURFACES ARE ALLOWED DUE TO RESTRAINING AND HANDLING DURING TESTING, TRANSPORT OR PROCESSING. THESE APPEAR AS INDICATORS THAT DO NOT AFFECT FORM, FIT OR FUNCTION AS INTENDED BY DESIGN OR APPLICATION
2. MOUNTING TORQUE FOR 6502 ADAPTOR: 50-60 LB-INCHES.
1. MOUNTING TORQUE FOR 2300V PROBE: 30 LB-INCHES.
- NOTES: UNLESS OTHERWISE SPECIFIED

REVISIONS					
REV.	ECN	DESCRIPTION	BY/DATE	CHK	APPR
B	9202	CONVERTED FROM ASHLAR TO SOLIDWORKS	AB 10/01/12	JS	DV
C	9256	ADDED DIMENSIONS: ZONE C2 .03, .24, AND .25	AB 10/10/12	JS	DV
D	12651	ADDED NOTE 3, TABULATION CHART	RA, 04/28/16	MH	LN



- PORT PREPARATION INSTRUCTIONS, 6502
1. DRILL $\phi .332$ THRU (OR .450 MIN DEPTH)
 2. TAP 3/8-24 UNF-2B X .350 MIN \downarrow
 3. $\square \phi .437 +.003/-.000 \times .030 \downarrow$


UNLESS OTHERWISE SPECIFIED:
INTERPRET DIM & TOL PER
ASME Y14.5M - 1994.
REMOVE BURRS.
COUNTERSINK INTERNAL THDS
90° TO MAJOR DIA.
CHAM EXT THDS 45° TO MINOR DIA.
THD LENGTHS AND DEPTHS ARE FOR
MIN FULL THDS.
DIMENSIONS APPLY AFTER FINISHING.

ALL MACHINED SURFACES.
TOTAL RUNOUT WITHIN .005.
BREAK SHARP EDGES .005 TO .010.
MACHINED FILLET RADII .005 TO .015.
WELDING SYMBOLS PER AWS A2.4.
ABBREVIATIONS PER MIL-STD-12.

UNLESS OTHERWISE SPECIFIED: DIMENSIONS ARE IN INCHES. DIMENSIONS IN BRACKETS [] ARE IN MILLIMETERS TOLERANCES ARE:		
DECIMALS .XX $\pm .03$.XXX $\pm .010$	METRIC .X ± 0.8 .XX ± 0.25	ANGLES $\pm 1^\circ$
APPROVALS		DATE
ORIG	AB	10/03/12
CHK	JS	10/12
APP	DV	10/12
DO NOT SCALE DRAWING		THIRD ANGLE PROJECTION USA



TITLE: OUTLINE/INSTALLATION DRAWING, MODEL 2300V				
SIZE B	CAGE CODE 2W033	DWG NO 127-2300V	REV D	
SCALE: 4:1		SHEET 1 OF 1		

MODEL NUMBER		PERFORMANCE SPECIFICATION				DOC NO.																																					
2300V3						PS2300V3																																					
		DYNAMIC PRESSURE SENSOR, IEPE				REV B, ECN 17319, 11/16/23																																					
		<ul style="list-style-type: none">• HIGH FREQUENCY• ULTRA FAST RISE TIME• HERMETIC																																									
						This family also includes:																																					
						<table><tr><th>Model</th><th>Sensitivity (mV/psi)</th><th>Range (psi pk)</th><th>Resolution (g RMS)</th><th>Oper. Temp(*F)</th><th>TC (Sec)</th></tr><tr><td>2300V1</td><td>20 (±15%)</td><td>250</td><td>0.004</td><td>-100 to +250</td><td>>2.0</td></tr><tr><td>2300V4</td><td>5 (±20%)</td><td>1000</td><td>0.014</td><td>-100 to +250</td><td>>10.0</td></tr><tr><td>2300V5</td><td>1 (±20%)</td><td>5000</td><td>0.07</td><td>-100 to +250</td><td>>50.0</td></tr><tr><td>2300V6</td><td>0.5 (±20%)</td><td>10000</td><td>0.14</td><td>-100 to +250</td><td>>100.0</td></tr><tr><td>2300V7</td><td>0.33 (±20%)</td><td>15000</td><td>0.21</td><td>-100 to +250</td><td>>5.0</td></tr></table>		Model	Sensitivity (mV/psi)	Range (psi pk)	Resolution (g RMS)	Oper. Temp(*F)	TC (Sec)	2300V1	20 (±15%)	250	0.004	-100 to +250	>2.0	2300V4	5 (±20%)	1000	0.014	-100 to +250	>10.0	2300V5	1 (±20%)	5000	0.07	-100 to +250	>50.0	2300V6	0.5 (±20%)	10000	0.14	-100 to +250	>100.0	2300V7	0.33 (±20%)	15000	0.21	-100 to +250	>5.0
Model	Sensitivity (mV/psi)	Range (psi pk)	Resolution (g RMS)	Oper. Temp(*F)	TC (Sec)																																						
2300V1	20 (±15%)	250	0.004	-100 to +250	>2.0																																						
2300V4	5 (±20%)	1000	0.014	-100 to +250	>10.0																																						
2300V5	1 (±20%)	5000	0.07	-100 to +250	>50.0																																						
2300V6	0.5 (±20%)	10000	0.14	-100 to +250	>100.0																																						
2300V7	0.33 (±20%)	15000	0.21	-100 to +250	>5.0																																						
						Refer to the performance specifications of the products in this family for detailed description.																																					
						Notes:																																					
						[1] A calibration certificate traceable to NIST is supplied with each instrument.																																					
						[2] Refers to maximum pressure before possibility of damage to internal electronics.																																					
						[3] Percent full scale, zero based fit straight line method.																																					
						[4] Maximum flash temperature +3000°F (+1649°C), short duration.																																					
						[5] From current limiting IEPE power unit only. Do not power up without current limiting power unit.																																					
						[6] In the interest of constant product improvement, we reserve the right to change the specification without notice																																					
PHYSICAL		ENGLISH		SI																																							
Weight, Max.		0.2		oz		7																																					
Mounting Provision		5/16-24 UNF-2A				grams																																					
Connector		10-32 COAXIAL																																									
Material (Housing/Diaphragm)		17-4ph / 316L																																									

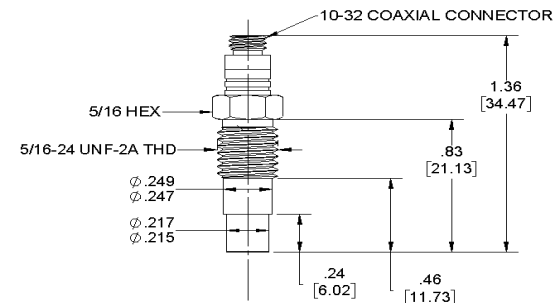
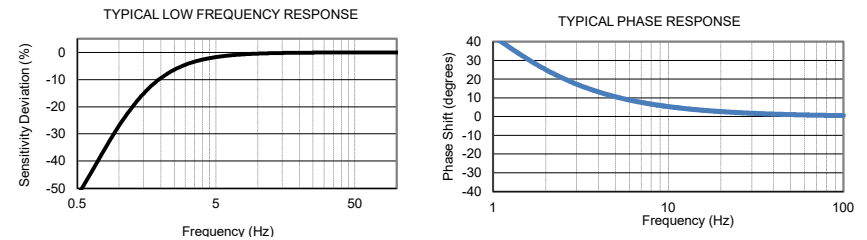
This family also includes:

Model	Sensitivity (mV/psi)	Range (psi pk)	Resolution (g RMS)	Oper. Temp(°F)	TC (Sec)
2300V1	20 (±15%)	250	0.004	-100 to +250	>2.0
2300V4	5 (±20%)	1000	0.014	-100 to +250	>10.0
2300V5	1 (±20%)	5000	0.07	-100 to +250	>50.0
2300V6	0.5 (±20%)	10000	0.14	-100 to +250	>100.0
2300V7	0.33 (±20%)	15000	0.21	-100 to +250	>5.0

Refer to the performance specifications of the products in this family for detailed description.

Notes:

- [1] A calibration certificate traceable to NIST is supplied with each instrument.
- [2] Refers to maximum pressure before possibility of damage to internal electronics.
- [3] Percent full scale, zero based fit straight line method.
- [4] Maximum flash temperature +3000°F (+1649°C), short duration.
- [5] From current limiting IEPE power unit only. Do not power up without current limiting power unit.
- [6] In the interest of constant product improvement, we reserve the right to change the specification without notice



21592 Marilla Street, Chatsworth, California 91311 Phone: 818.700.7818 Fax:818.698.0362 www.dytran.com For permission to reprint this content, please contact info@dytran.com