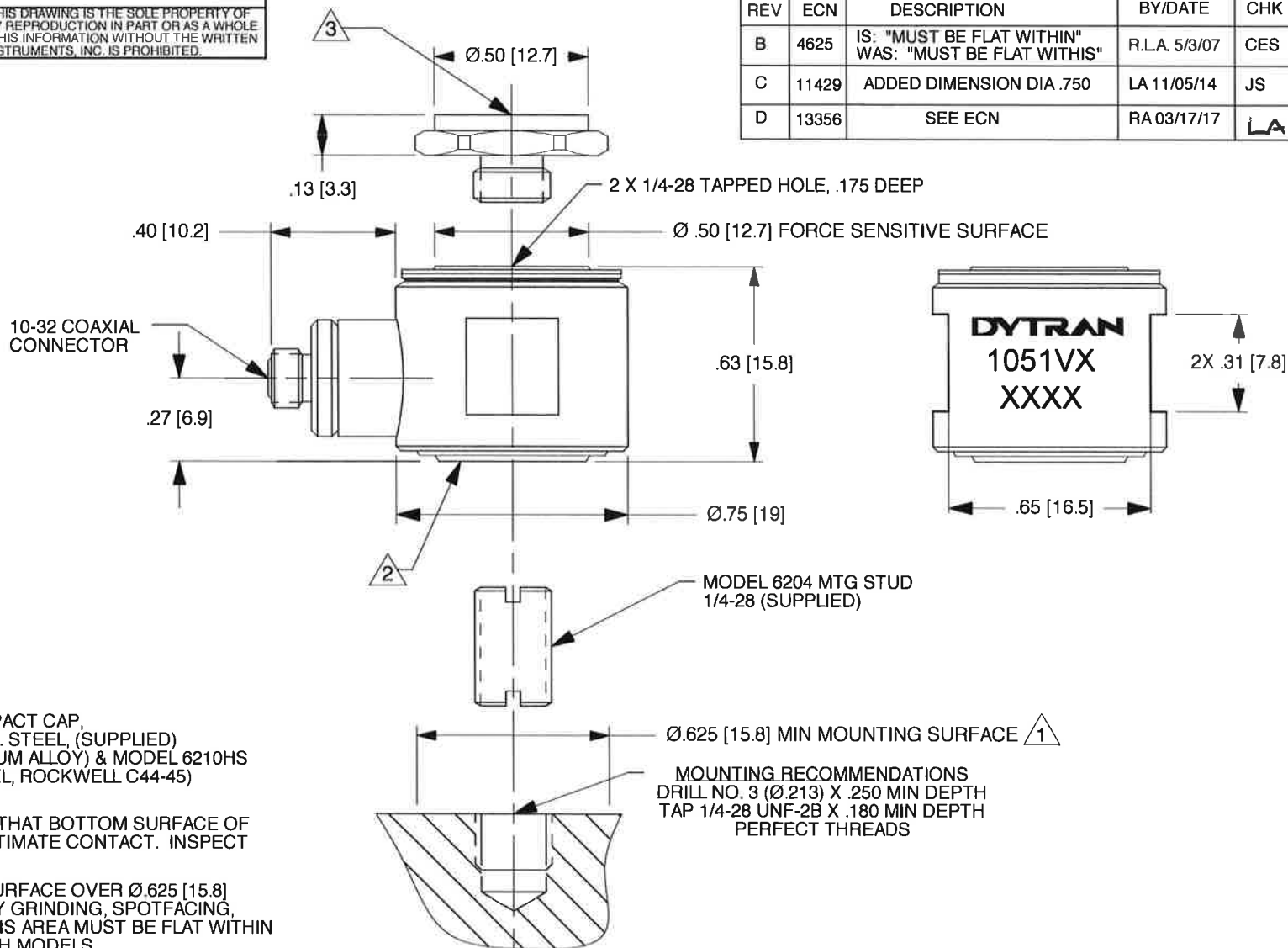


THE INFORMATION CONTAINED IN THIS DRAWING IS THE SOLE PROPERTY OF DYTRAN INSTRUMENTS, INC. AND ANY REPRODUCTION IN PART OR AS A WHOLE OR ANY OTHER DISSEMINATION OF THIS INFORMATION WITHOUT THE WRITTEN PERMISSION OF DYTRAN INSTRUMENTS, INC. IS PROHIBITED.

REV	ECN	DESCRIPTION	BY/DATE	CHK	APPR
B	4625	IS: "MUST BE FLAT WITHIN" WAS: "MUST BE FLAT WITHIS"	R.L.A. 5/3/07	CES	CES
C	11429	ADDED DIMENSION DIA .750	LA 11/05/14	JS	LN
D	13356	SEE ECN	RA 03/17/17	LA	LN




- 3 MODEL 6210S IMPACT CAP,
MATERIAL: 303 ST. STEEL, (SUPPLIED)
MODEL 6210A (ALUM ALLOY) & MODEL 6210HS
(17-4 PH ST. STEEL, ROCKWELL C44-45)
ALSO AVAILABLE
- 2 IT IS IMPORTANT THAT BOTTOM SURFACE OF
SENSOR BE IN INTIMATE CONTACT. INSPECT
FOR BURRS, ETC.
- 1 PREPARE FLAT SURFACE OVER Ø.625 [15.8]
MINIMUM AREA BY GRINDING, SPOTFACING,
LAPPING ETC. THIS AREA MUST BE FLAT WITHIN
.001 TIR, TYP BOTH MODELS.

NOTES: UNLESS OTHERWISE SPECIFIED

UNLESS OTHERWISE SPECIFIED: INTERPRET DIM & TOL PER ASME Y14.5M-1994. REMOVE BURRS COUNTERSINKS INTERNAL THDS 90° TO MAJOR DIA CHAM EXT THDS 45° TO MAJOR DIA THD LENGTHS AND DEPTHS ARE FOR THDS PER MIL-S- 7742. DIMENSIONS APPLY AFTER FINISHING.		UNLESS OTHERWISE SPECIFIED DIMENSIONS ARE IN INCHES. DIMENSION IN BRACKETS [] ARE IN MILLIMETERS. TOLERANCES ARE: INCHES METRIC ANGLES .XX ±.03 .X ± 0.8 ± 1° .XXX ±.010 .XX ± 0.25		CONTRACT NO.	
USED ON	NEXT ASSY	MATERIAL		APPROVALS	
APPLICATION		FINISH		ORIG	N.C. 1/30/82
THIRD ANGLE PROJECTION USA		DO NOT SCALE DRAWING		CHK	N.C. 1/30/82
ALL MACHINED SURFACES TOTAL RUNOUT WITHIN .005 BREAK SHARP EDGES .005 TO .010 MACHINE FILLET RADI .005 TO .015 WELDING SYMBOLS PER AWS A2.4 ABBREVIATIONS PER MIL-STD-12				APP	LN. 11/19/14
				APP	

TITLE					
OUTLINE/INSTALLATION DRAWING, MODEL 1051V					
SIZE	CAGE CODE	DWG. NO.	REV		
A	2W033	127-1051V	D		
SCALE:	NONE	ASHLAR GRAPHITE	SHEET 1 OF 1		

Model Number 1051V4		PERFORMANCE SPECIFICATION						DOC NO PS1051V4	
		DYNAMIC FORCE SENSOR, IEPE				REV E, ECN 16679, 03/24/22			
		<ul style="list-style-type: none">• COMPRESSIVE & TENSILE LOADINGS• EXCELLENT LINEARITY• IEPE, VOLTAGE MODE							
		ENGLISH		SI					
PHYSICAL									
Weight, Max.		1.0	oz	28	grams				
Connector		10-32		10-32					
Material		Stainless Steel		Stainless Steel					
Sensing Element	Material Mode	Quartz		Quartz					
		Compression		Compression					
PERFORMANCE									
Sensitivity, ± 10 %		10	mV/lbf	2.25	mV/N				
Compression Range		500	lbf	2224.1	N				
Maximum Compression		10,000	lbf	44482	N				
Tension Range		500	lbf	2224.1	N				
Maximum Tension [1]		500	lbf	2224	N				
Resolution		0.007	lbf, RMS	0.03114	N				
Linearity [2]		±1	% Full Scale	±1	% Full Scale				
Resonant Frequency, Unloaded		>39	kHz	>39	kHz				
Stiffness, Force Sensor		11.4	lbf/μin	2.0	kN/μm				
ENVIROMENTAL									
Maximum Shock, Unloaded		10,000	g pk	98100	m/s ² pk				
Temperature Range		-100 to +250	°F	-73 to +121	°C				
Thermal Coefficient		0.03	%/°F	0.05	%/°C				
Seal		Epoxy		Epoxy					
ELECTRICAL									
Output Voltage F.S		±5	V	±5	V				
Output Impedance		<100	Ω	<100	Ω				
Bias Voltage		7.5 to 9.5	VDC	7.5 to 9.5	VDC				
Compliance Voltage Range		18 to 30	VDC	18 to 30	VDC				
Supply Current Range [4]		2 to 20	mA	2 to 20	mA				
Discharge Time Constant, Min		1000	Sec	1000	Sec				